

# SONO SQUARE

22 ELIZABETH STREET, SOUTH NORWALK, CT

DAVID ADAM REALTY

DIAMOND PROPERTIES



**USE**  
OFFICE

**SIZE**  
150 - 11,767 RSF

**RENT**  
\$25 PSF GROSS  
+ UTILITIES

**AVAILABLE**  
IMMEDIATE

**DESCRIPTION:** Multiple configurations of office space available for lease at SoNo Square, a unique 97,000 +/- SF mixed-use building located in the heart of South Norwalk. Offices range in size from a single room up to 11,767 RSF. Amazing location within walking distance to the water, Washington Street restaurants, MetroNorth train station, and the new 700,000 SF SoNo Collection shopping mall. Ample free parking available in private parking lot.

**CONTACT:**

Sean Grathwohl  
203.349.5005 | sean@davidadamrealty.com



57 Wilton Road, Westport, CT 06880 | Phone 203.221.8148 | Fax 203.341.7494 | www.davidadamrealty.com

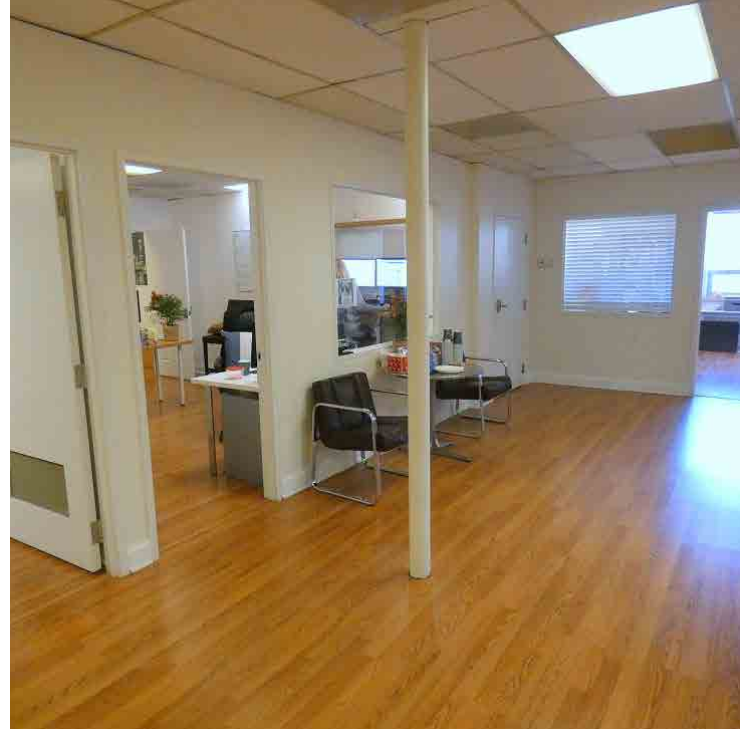
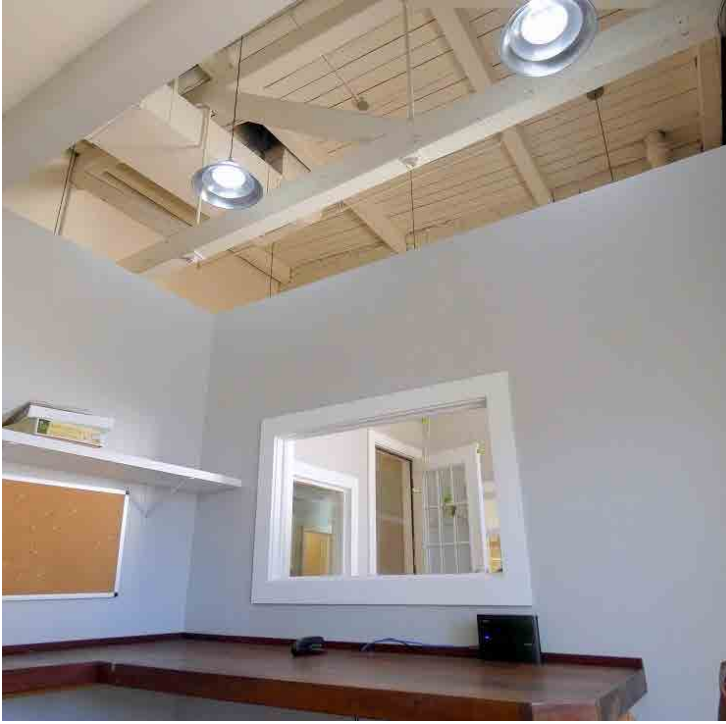
The information above has been obtained from sources believed to be reliable. While we do not doubt it's accuracy, we have not verified it and make no guarantee, warranty or representation about it. It is your responsibility to independently confirm its accuracy and completeness.

# SONO SQUARE

22 ELIZABETH STREET, SOUTH NORWALK, CT

  
DAVID ADAM REALTY

 DIAMOND  
PROPERTIES

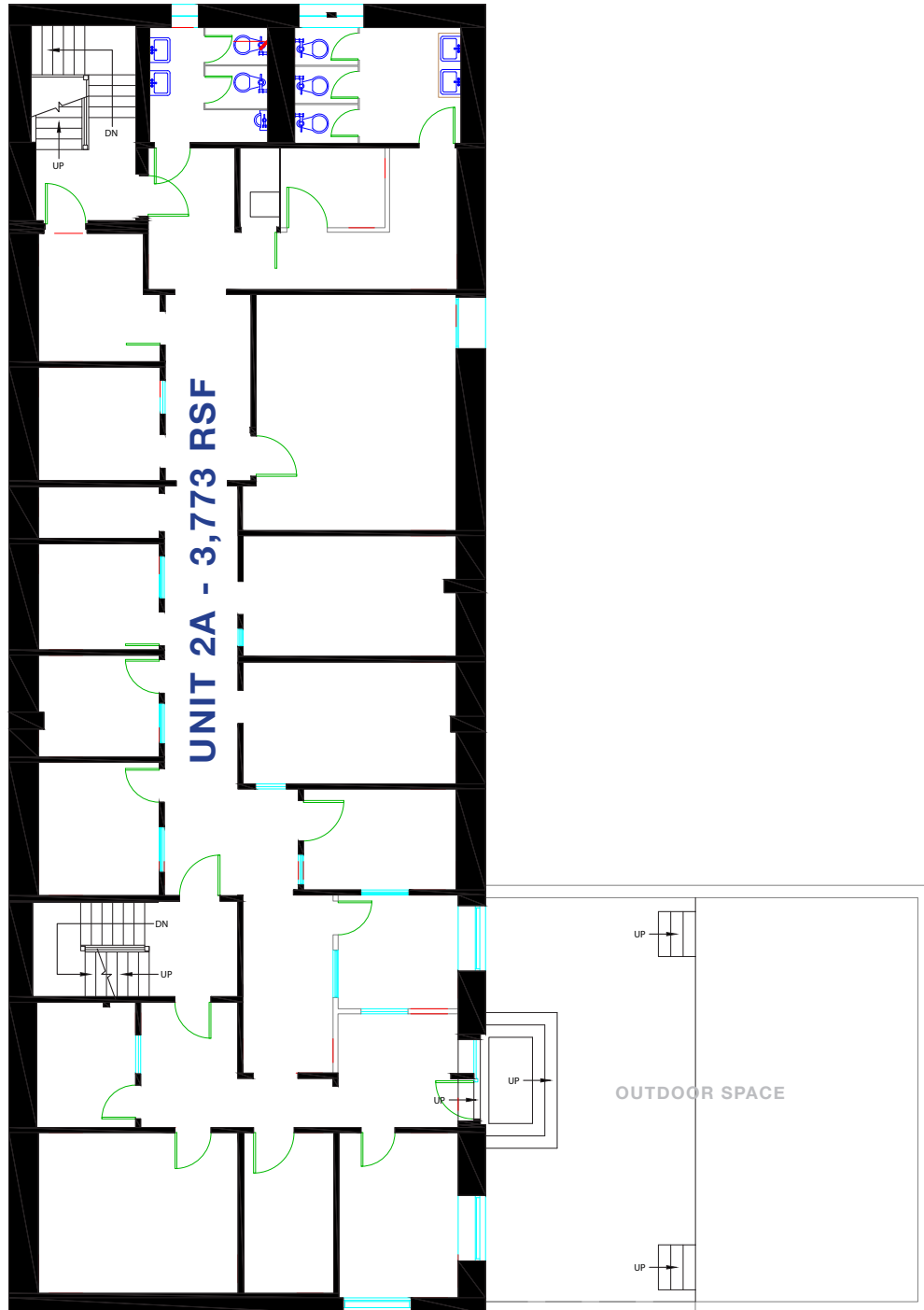


57 Wilton Road, Westport, CT 06880 | Phone 203.221.8148 | Fax 203.341.7494 | [www.davidadamrealty.com](http://www.davidadamrealty.com)

The information above has been obtained from sources believed to be reliable. While we do not doubt it's accuracy, we have not verified it and make no guarantee, warranty or representation about it. It is your responsibility to independently confirm its accuracy and completeness.

# SONO SQUARE

22 ELIZABETH STREET, SOUTH NORWALK, CT

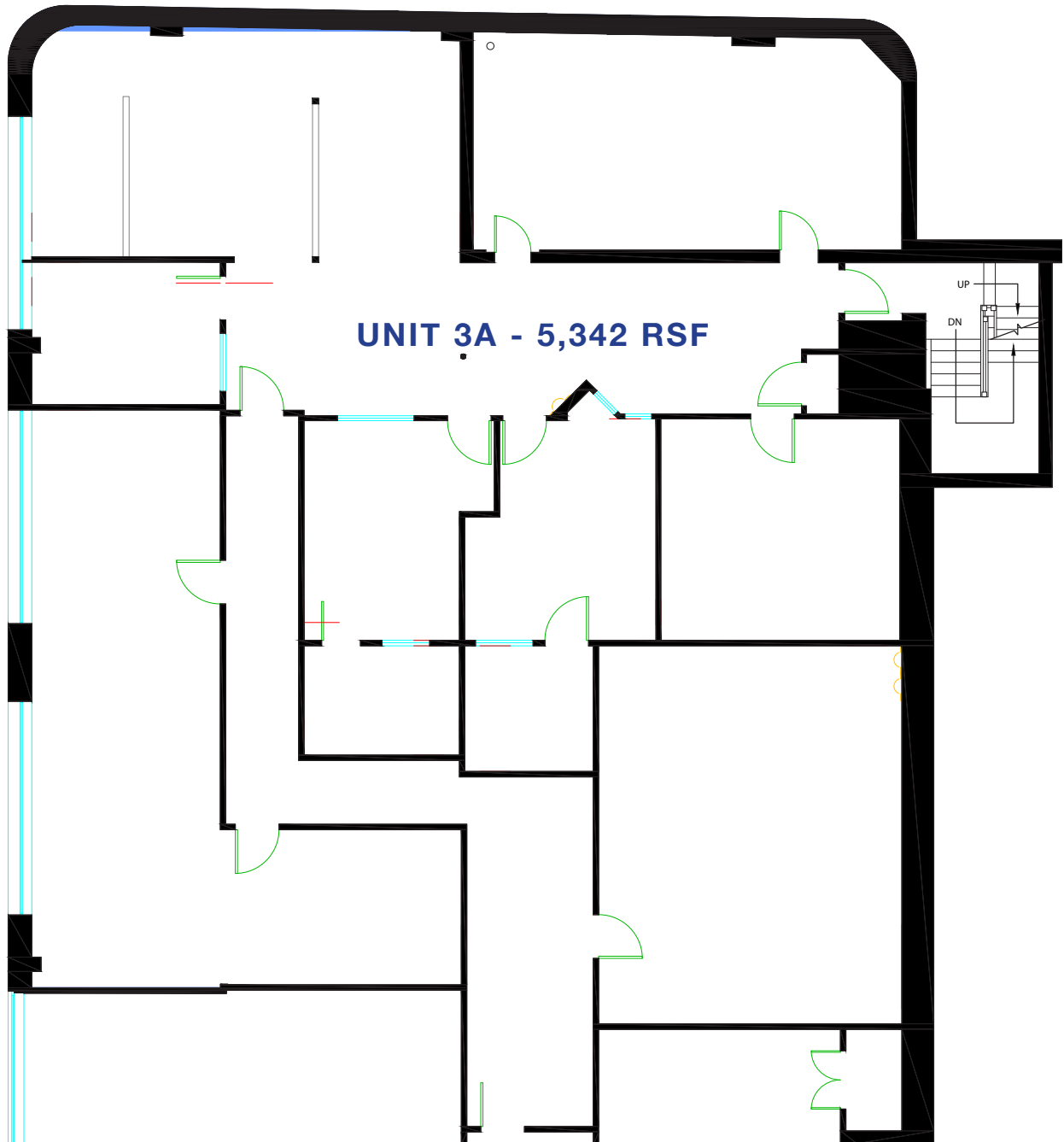


57 Wilton Road, Westport, CT 06880 | Phone 203.221.8148 | Fax 203.341.7494 | [www.davidadamrealty.com](http://www.davidadamrealty.com)

The information above has been obtained from sources believed to be reliable. While we do not doubt it's accuracy, we have not verified it and make no guarantee, warranty or representation about it. It is your responsibility to independently confirm its accuracy and completeness.

# SONO SQUARE

22 ELIZABETH STREET, SOUTH NORWALK, CT

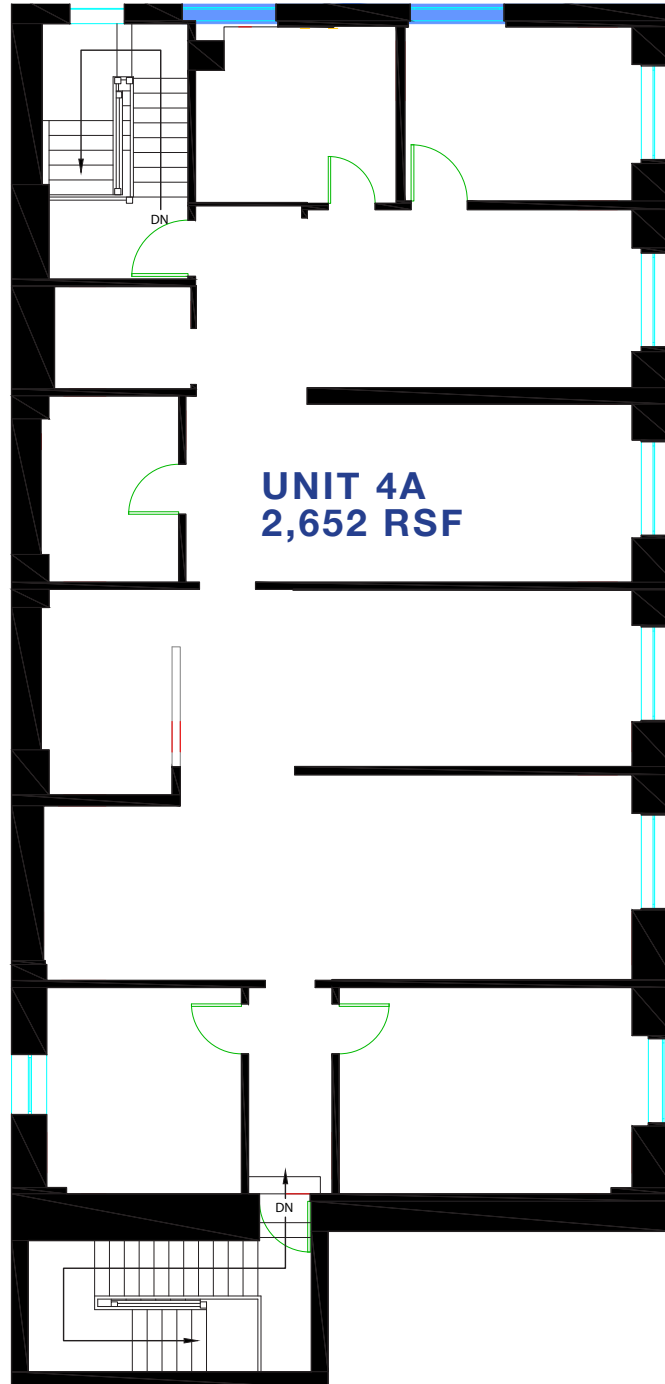


57 Wilton Road, Westport, CT 06880 | Phone 203.221.8148 | Fax 203.341.7494 | [www.davidadamrealty.com](http://www.davidadamrealty.com)

The information above has been obtained from sources believed to be reliable. While we do not doubt it's accuracy, we have not verified it and make no guarantee, warranty or representation about it. It is your responsibility to independently confirm its accuracy and completeness.

# SONO SQUARE

22 ELIZABETH STREET, SOUTH NORWALK, CT



57 Wilton Road, Westport, CT 06880 | Phone 203.221.8148 | Fax 203.341.7494 | [www.davidadamrealty.com](http://www.davidadamrealty.com)

The information above has been obtained from sources believed to be reliable. While we do not doubt it's accuracy, we have not verified it and make no guarantee, warranty or representation about it. It is your responsibility to independently confirm its accuracy and completeness.