

# Compass Commons



**57 Wilton Road, Westport, CT**

## PROPERTY DESCRIPTION

Private entrance in the rear of the building. Cathedral ceilings, exposed beams, lots of light, three offices and central open area, with restroom in suite. Across the street from Save the Children, walking distance to Downtown Westport. 3 parking spaces/1000.



## SPACE AVAILABLE:

1,180 SF on Second Floor

## RENTAL RATE:

\$28.50 Gross + Electric

**TERM:** Negotiable

**OCCUPANCY:** Vacant

## EXCLUSIVE AGENTS

SHARON MADDERN

Office 203.221.8148

Cell 203.981.9897

sharon@davidadamrealty.com

SEAN GRATHWOHL

Office 203.349.5005

Cell 203.505.3565

sean@davidadamrealty.com

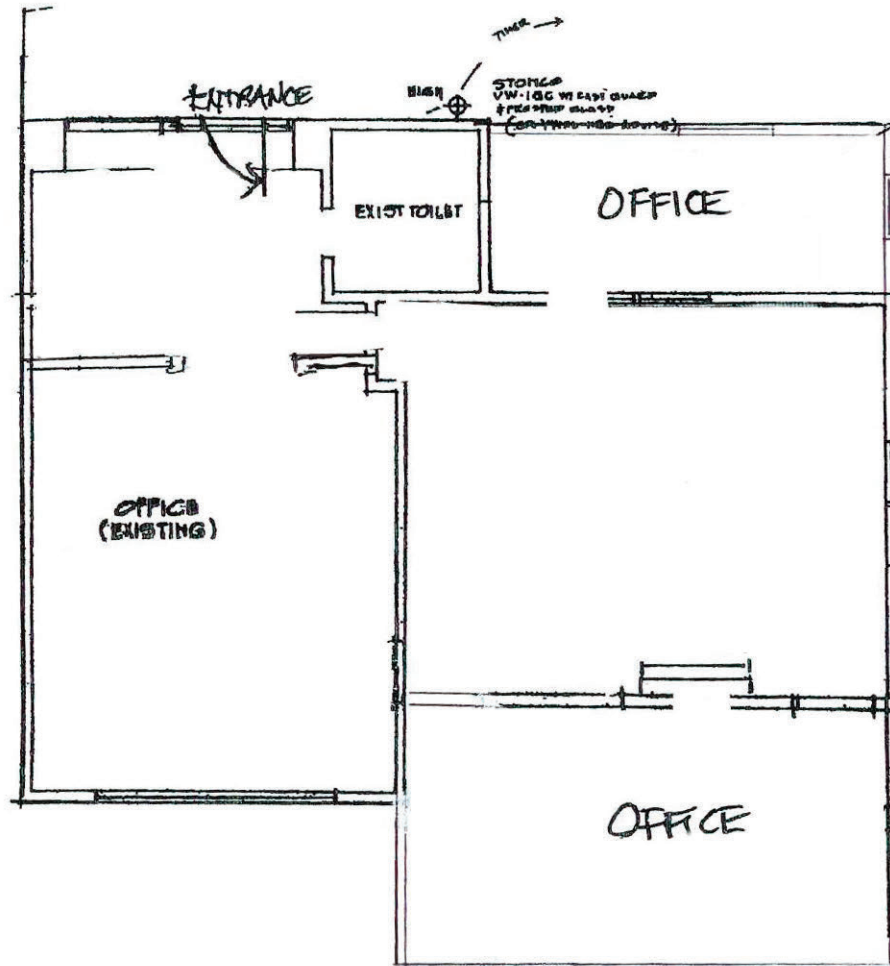


**DAVID ADAM REALTY**

28 CHURCH LANE, WESTPORT, CT 06880  
Phone 203.221.8148 • Fax 203.341.7494  
www.davidadamrealty.com

# 57 Wilton Road, Westport, CT

## FLOOR PLAN



28 CHURCH LANE, WESTPORT, CT 06880  
Phone 203.221.8148 • Fax 203.341.7494  
[www.davidadamrealty.com](http://www.davidadamrealty.com)