

Retail & Office Space for Sublease



57 Main Street, Westport, CT

Highly visible frontage on Main Street and Parker Harding Plaza. Desirable downtown location above the high traffic Blue Mercury store. Area tenants include Pottery Barn, Loft, Banana Republic, BCBG and more. Great ceiling heights. The space divides down to 1,000 SF +/- and 1,400 SF +/- . Perfect for store, yoga studio, hair salon, etc.



OLD SPORT MART STORE

AREA DEMOGRAPHICS

Population

Avg. Household Income

1 Mile

5,228

\$226,282

3 Miles

39,993

\$213,339

5 Miles

114,449

\$161,691

SPACE AVAILABLE

2nd Floor Retail:

- A. 1,000 SF +/- Accessed from Main Street
- B. 1,400 SF +/- Accessed from Parker-Harding Plaza

FRONTAGE: 11'

RENT

2nd Floor Retail:

- A. \$4,000/Month Gross + Utilities
- B. \$4,000/Month Gross + Utilities

AVAILABLE: Now

EXCLUSIVE AGENT

SHARON MADDERN

Office 203.221.8148

Cell 203.981.9897

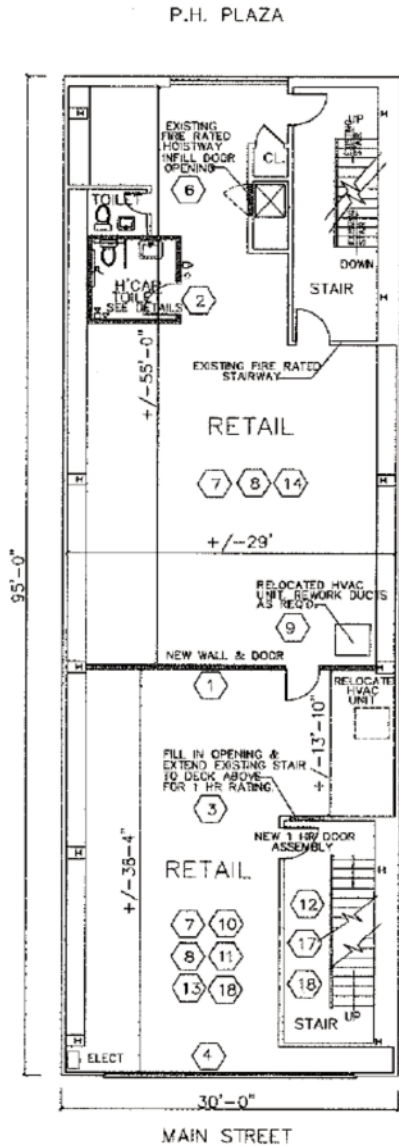
sharon@davidadamrealty.com



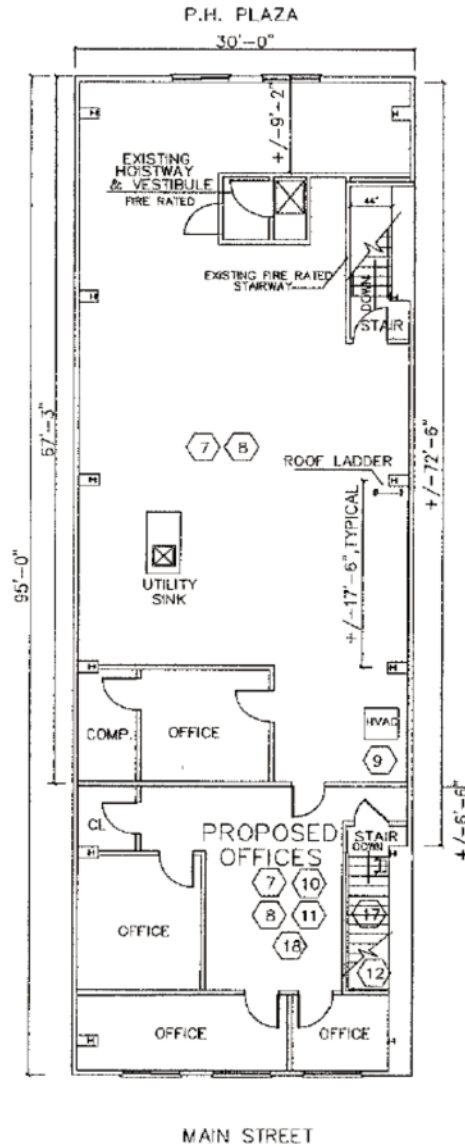
DAVID ADAM REALTY

28 CHURCH LANE, WESTPORT, CT 06880
Phone 203.221.8148 • Fax 203.341.7494
www.davidadamrealty.com

57 Main Street



SECOND FLOOR PLAN



THIRD FLOOR PLAN



28 CHURCH LANE, WESTPORT, CT 06880
 Phone 203.221.8148 • Fax 203.341.7494
www.davidadamrealty.com