

**NEW!!!**  
**2412 SF OPEN SPACE**  
**ON STREET LEVEL**  
**RENT REDUCED TO \$50 PSF**



**UNIQUE DOWNTOWN WESTPORT RETAIL/OFFICE SPACE**

**181 MAIN STREET  
 WESTPORT, CT**

**JOIN TALBOTS, POPYRUS, J.CREW, COACH AND MORE**

Premier signature property in Downtown Westport with rare, dedicated building parking lot. Dramatic atrium interior, loft style retail space or high energy office environment. Riverfront views, balconies and great feng shui.



**SPACE AVAILABLE**

2377 SF on 1st floor (w staircase)  
 1369 SF on 2nd floor  
 Combined for total 3746 SF  
 First floor can be demised to 2412 SF with staircase removed

**RENT**

\$50 NNN Blended

**PARKING**


10 Dedicated spaces plus 18 shared surface spaces

**EXCLUSIVE AGENTS**

**SHARON MADDERN**  
 Office 203.221.8148  
 Cell 203.981.9897  
 sharon@davidadamrealty.com

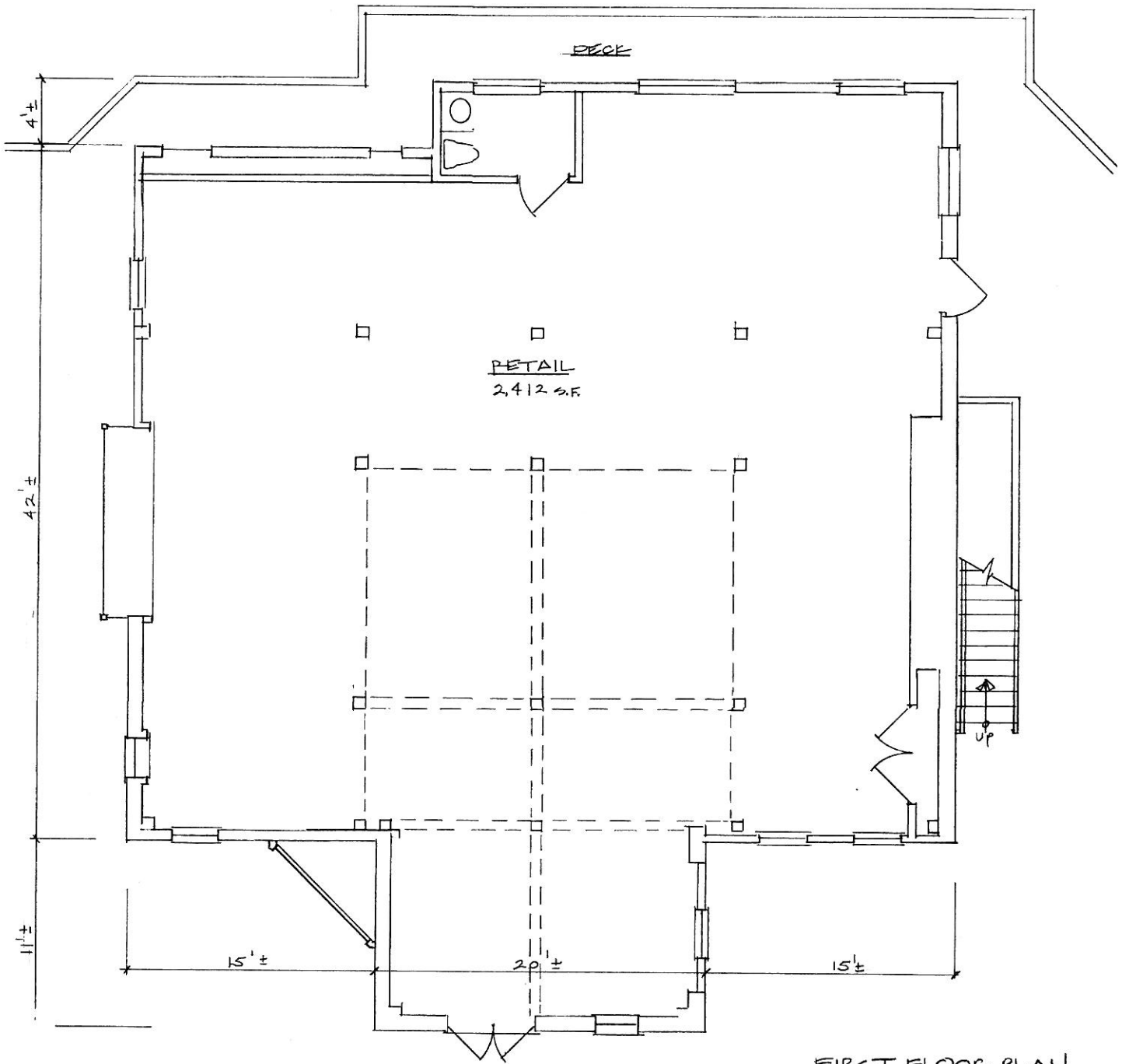
**AREA DEMOGRAPHICS**

	Radius 1 3 miles	Radius 2 5 miles	Radius 3 7 miles
Population	5,422	21,684	44,531
No. of Households	2,013	8,022	16,525
Avg. Household Income	\$182,564	\$171,283	\$155,320
Median Household Income	\$125,204	\$126,210	\$119,351



**DAVID ADAM REALTY**  
 8 CHURCH LANE, SUITE 200  
 WESTPORT, CT 06880  
 Phone 203.221.8148 • Fax 203.341.7494  
 www.davidadamrealty.com

# 181 MAIN STREET



FIRST FLOOR PLAN  
SCALE: 1/4" = 1'-0"  
WESTPORT VILLAGE